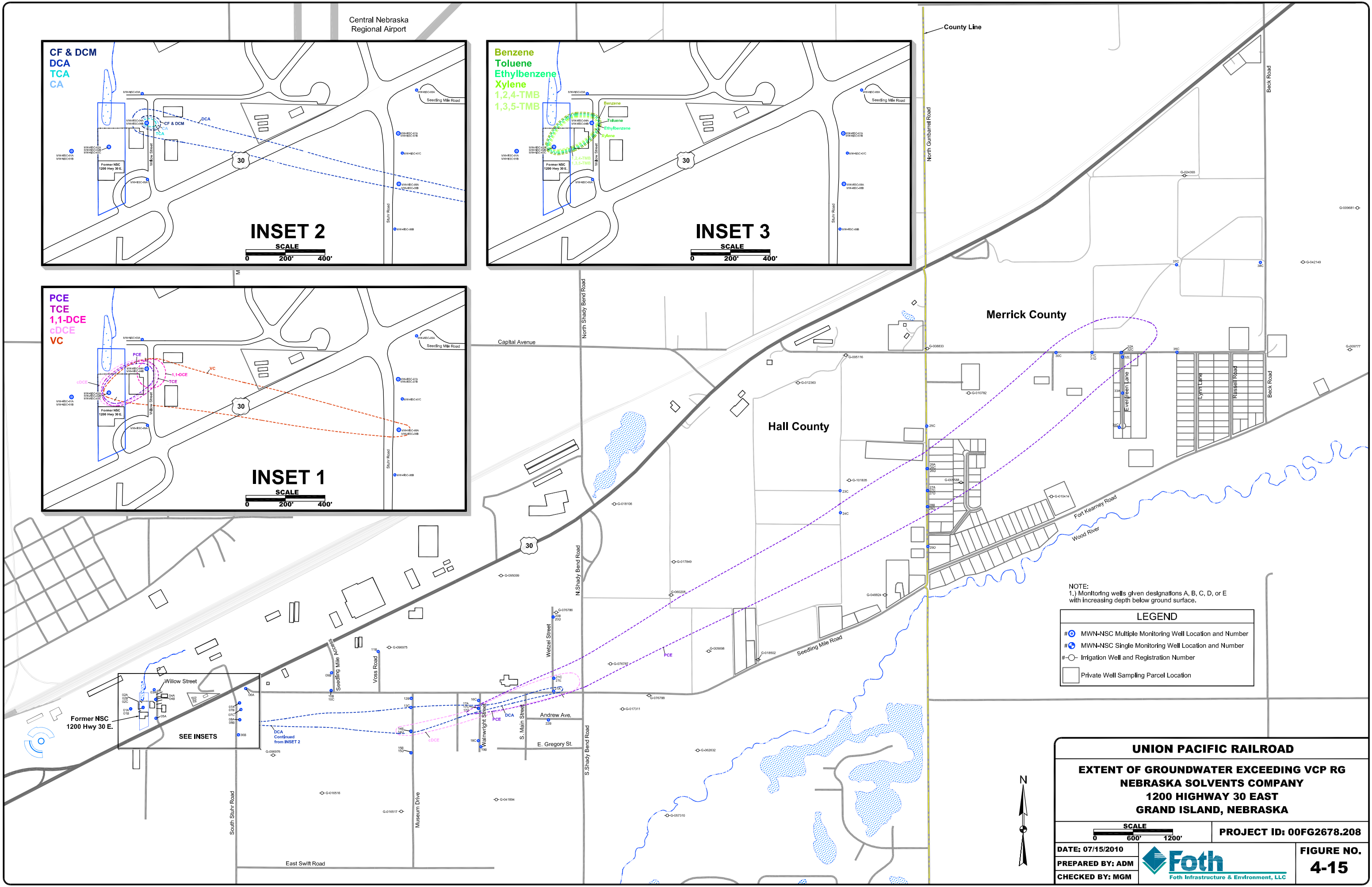
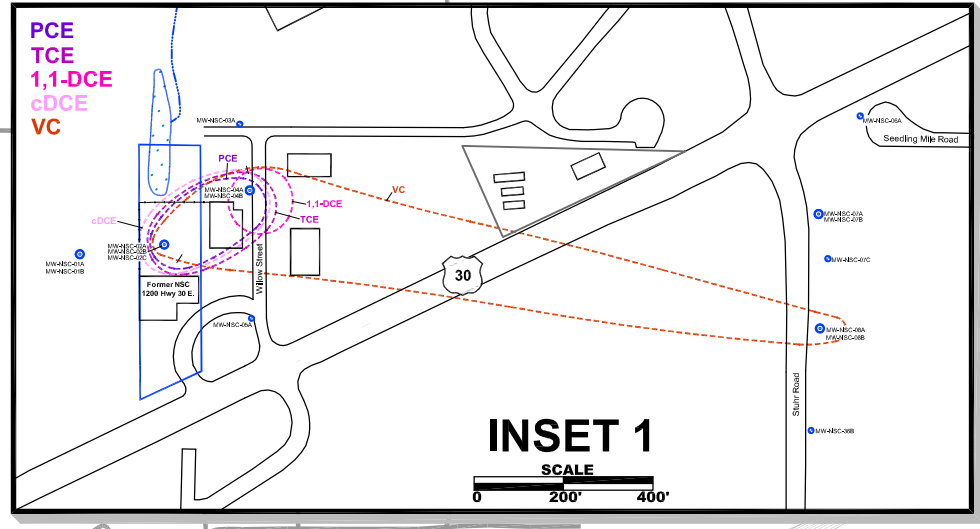
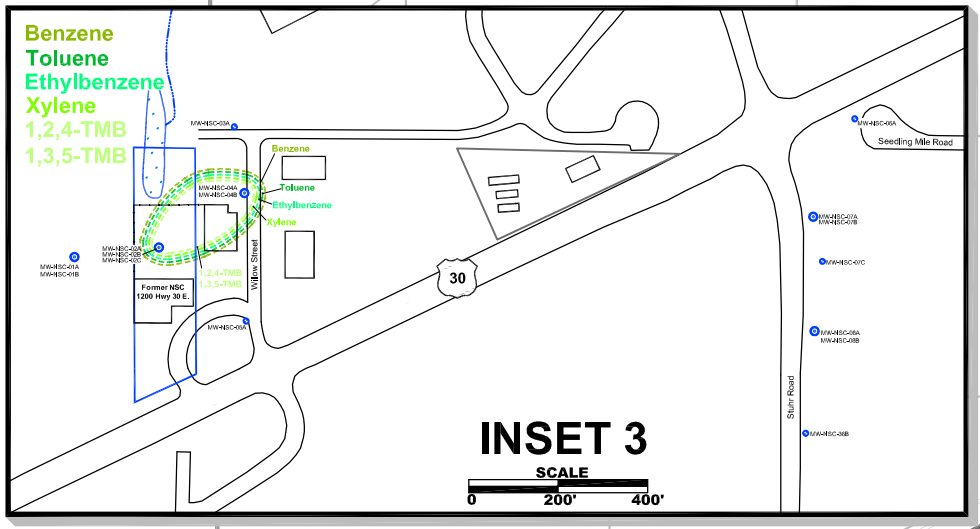
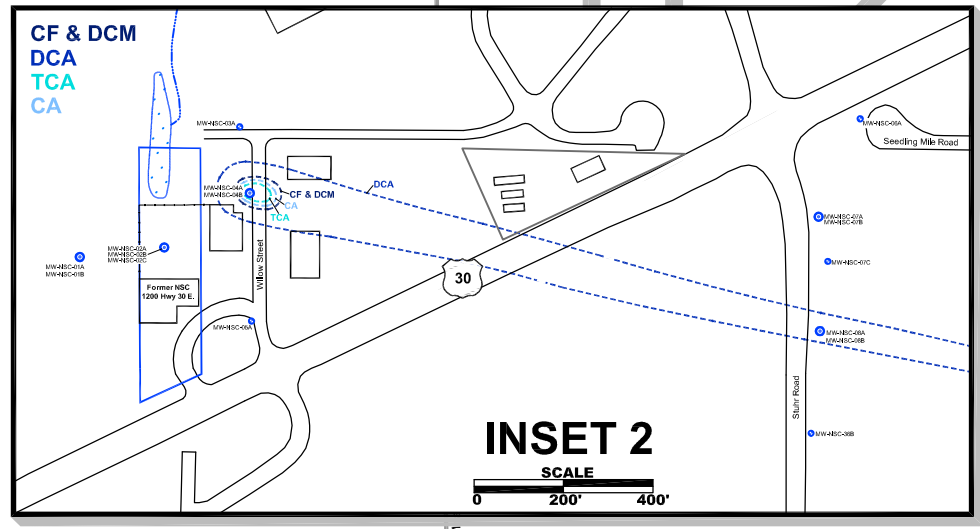


Central Nebraska
Regional Airport

County Line



Merrick County

Hall County

NOTE:
1.) Monitoring wells given designations A, B, C, D, or E
with increasing depth below ground surface.

| LEGEND | |
|--------|--|
| # | MWN-NSC Multiple Monitoring Well Location and Number |
| # | MWN-NSC Single Monitoring Well Location and Number |
| # | Irrigation Well and Registration Number |
| | Private Well Sampling Parcel Location |

UNION PACIFIC RAILROAD
EXTENT OF GROUNDWATER EXCEEDING VCP RG
NEBRASKA SOLVENTS COMPANY
1200 HIGHWAY 30 EAST
GRAND ISLAND, NEBRASKA

SCALE
0 600' 1200'

PROJECT ID: 00FG2678.208

DATE: 07/15/2010
PREPARED BY: ADM
CHECKED BY: MGM

Foth
Foth Infrastructure & Environment, LLC

FIGURE NO.
4-15

© 2010 Foth Infrastructure & Environment, LLC