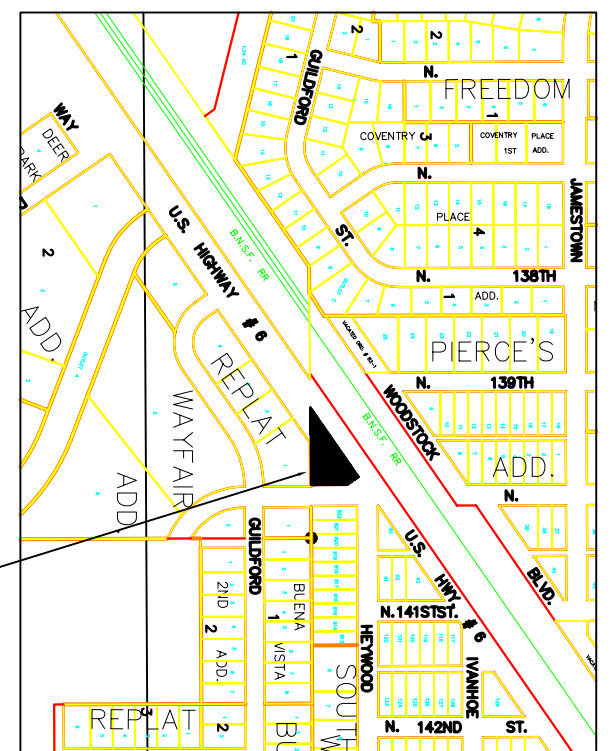


**UTILITY CONTACTS:**  
 Fiber Optic Cable --- Level (3) Communications  
 1-877-366-8344  
 Fiber Optic Cable --- MDI 1-800-624-9875  
 Fiber Optic Cable --- Quest 1-800-283-4237  
 AT&T --- 402-467-6133  
 Aquila --- 1-800-303-0752  
 Water and Sewer---City of Waverly  
 402-786-2312, City of Lincoln 402-441-7171  
 LES (Lincoln Electric System) 402-475-4211  
 Charter (Cable TV Service) 1-800-373-2225

**BENCH MARK**  
 First Floor  
 North door of Gas N Shop  
 Elev. 100.00

- +++++ RAILROAD TRACKS
- UNDERGROUND TELEPHONE LINE
- OVERHEAD TELEPHONE LINE
- SANITARY SEWER LINE
- WATER LINE
- STORM SEWER LINE
- TELEPHONE COFFIN
- WATER VALVE
- POWER POLE
- FIRE HYDRANT
- LIGHT POLE
- GUY WIRE

- SIGN
- OVERHEAD ELECTRIC LINE
- UNDERGROUND ELECTRIC LINE
- FIBER OPTIC CABLE TV LINE
- GAS LINE
- TELEVISION MANHOLE
- STORM SEWER MANHOLE
- SANITARY SEWER MANHOLE
- ELECTRICAL MANHOLE
- CURB STOP
- PROPERTY LINE
- MONUMENT FOUND, CHISELED X IN CONC.
- MONUMENT FOUND, AS MARKED
- MONITORING WELL



| MONITORING WELL ID | NORTHING | EASTING | ELEVATION AT TOP OF MONITORING WELL CAP | ELEVATION AT TOP OF NORTH EDGE OF PVC PIPE |
|--------------------|----------|---------|---|--|
| OW-1               | 740.52   | 707.31  | 96.94                                   | 96.31                                      |
| OW-2               | 735.35   | 700.01  | 96.91                                   | 96.41                                      |
| RW-1               | 748.85   | 719.38  | 97.04                                   | 96.43                                      |
| EW-1               | 597.17   | 655.07  | 98.66                                   | 98.46                                      |
| SW-1               | 592.78   | 648.96  |   |  |
| SW-2               | 582.18   | 636.36  |   |  |
| MW-1               | 588.55   | 645.89  | 98.70                                   | 98.39                                      |
| MW-2               | 625.90   | 735.85  | 98.48                                   | 98.06                                      |
| MW-3               | 527.88   | 734.31  | 98.93                                   | 98.61                                      |
| MW-4               | 525.08   | 612.58  | 98.98                                   | 98.61                                      |
| MW-5               | 703.57   | 653.65  | 97.13                                   | 96.43                                      |
| MW-6               | 685.35   | 696.74  | 97.41                                   | 96.98                                      |
| MW-7               | 619.67   | 531.39  | 97.05                                   | 96.82                                      |
| MW-8               | 621.75   | 534.34  | 97.12                                   | 96.83                                      |
| MW-9               | 744.69   | 713.48  | 96.91                                   | 96.62                                      |
| MW-10              | 806.02   | 557.49  | 94.98                                   | 94.72                                      |
| MW-11              | 761.38   | 490.55  | 95.60                                   | 95.40                                      |

**TOPOGRAPHIC SURVEY**  
 TRUE VALUE



This survey was done at the request of ROO GEO  
 10260 Sapp Brothers Drive  
 Omaha, NE 68135

|   |   |
|---|---|
| <b>PROJECT TITLE</b><br><b>GAS N SHOP CONVENIENCE STORE</b><br><b>WAVERLY, NEBRASKA</b> | <b>SHEET TITLE</b><br><b>TOPOGRAPHIC SURVEY</b> |
|   |   |
| Ph: 402.371.6416      PO Box 1424      Norfolk, Nebraska 68702                          |   |

|  |   |  |
|--|---|--|
| <b>DATE</b><br>8-30-05<br><b>PROJECT NO.</b><br>0165U3 | <b>DESIGNED BY</b><br>KSL<br><b>PLANNING GROUP</b><br>KSL | <b>SCALE</b><br>1" = 30'<br><b>FIELD BOOK</b><br>MISC. N-2 |
| <b>FIELD NAME</b><br>MISC. N-2                         | <b>REVISION</b><br>NONE                                   | <b>DATE</b><br>8-30-05                                     |
| <b>1 OF 1</b>  |   |  |