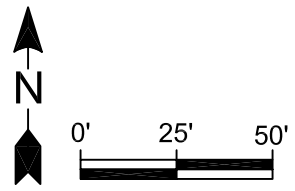


| | |
|--------|---|
| | Monitoring Well Location (Installed by Coranco) |
| | Monitoring Well Location (Installed by RDG) |
| | Recovery Well Location |
| | Observation Well Location |
| | Vapor Extraction Well Location |
| | Vapor Observation Well Location |
| 0.0145 | Benzene Analytical Results (01/10/07) (mg/L) |
| 0.054 | Benzene Analytical Results collected by Coranco (02/26/07) (mg/L) |
| | Storm Sewer |
| | Water Line |
| | Gas Line |
| | Sanitary Sewer |
| | Overhead Electric |
| | Underground Telephone |
| | Overhead Telephone |
| | Location of Former Pollard UST |
| | Location of Former Kruger UST |
| | Utility Pole |



Benzene
Isoconcentration
Map

Pollard Implement
647 Main Street
North Bend, NE

| | |
|-----------------------|--------------------|
| Date: 06/01/07 | Prepared by: QK |
| UG# 021706-NM-1300 | Reviewed by: |

Geoscience &
Engineering