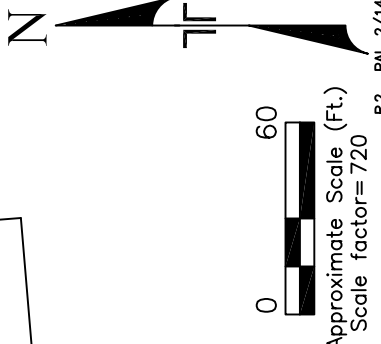
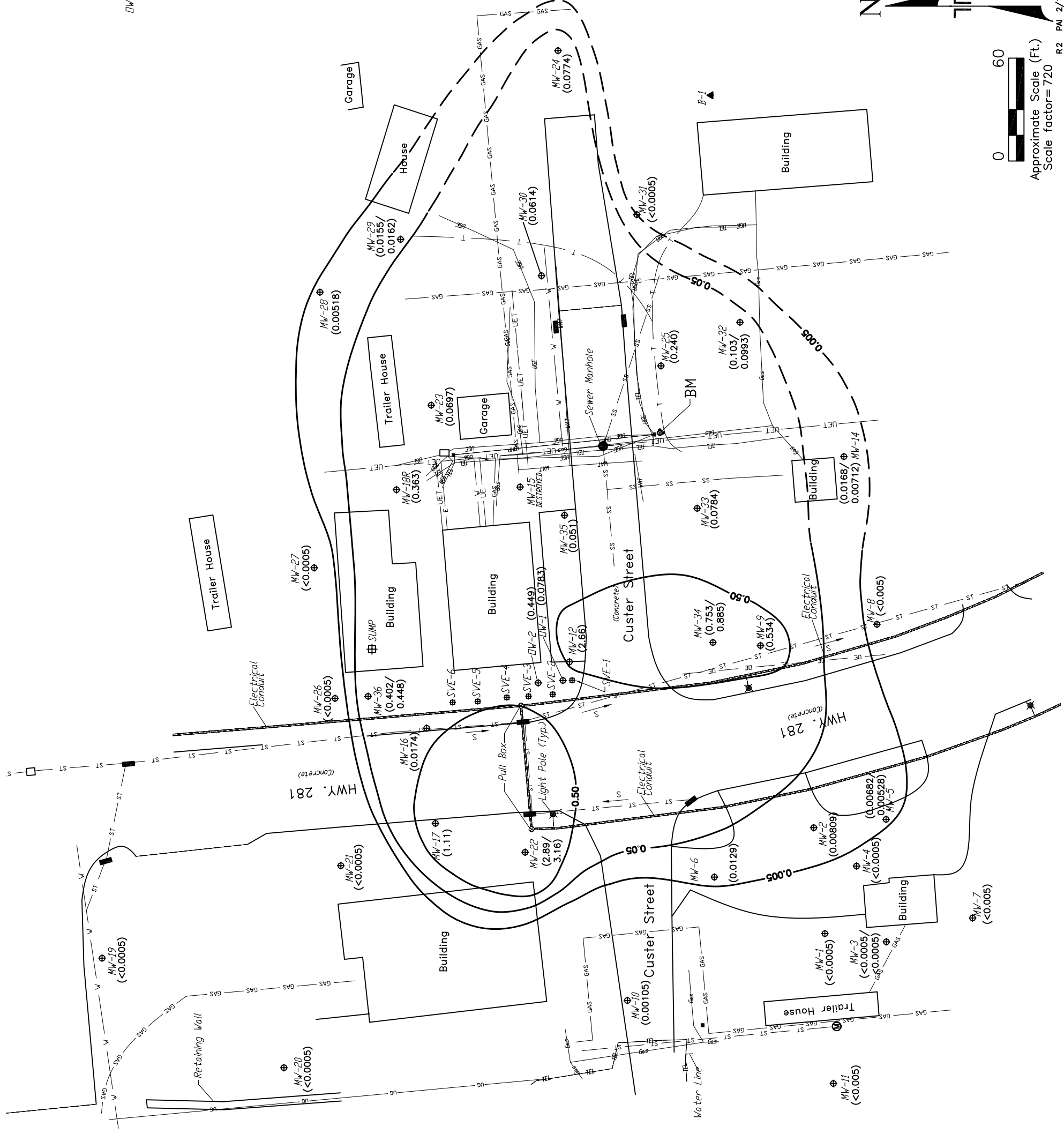


LEGEND

- B-1 ▲ SOIL BORING
- ⊕ APPROXIMATE SUMP LOCATION (AUTO DETAILING SHOP)
- ⊕ MW-1/MW-1 SVE-1 # OBSERVATION/MONITORING WELL
- ⊕ SVE-1 # SVE WELL FOR PILOT TEST
- ▭ BUILDING
- GAS NATURAL GAS LINE
- SS SANITARY SEWER
- ST STORM SEWER
- UGE ELECTRIC (BURIED)
- T UNDERGROUND TELEPHONE
- W WATER LINE
- UET UNDERGROUND ELECTRIC & TELEPHONE
- DE OVERHEAD ELECTRIC
- W WATER LINE
- X FENCE LINE
- S SLOPE DIRECTION OF STORM SEWER
- BM BENCHMARK: FIRE HYDRANT (N. BOLT), NGVD 29 DATUM ELEV: 1792.91
- 0.50 ESTIMATED BENZENE CONCENTRATION ISOPLETH (mg/L)
- (0.051) DISSOLVED BENZENE CONCENTRATIONS (mg/L) FOR THE DECEMBER 2005 SAMPLING EVENT

NOTES:
 1.) UTILITIES SHOWN ARE LOCATED BY LOCAL UTILITY COMPANIES AND SURVEYED EAST OF HIGHWAY 281. UTILITIES WEST OF HIGHWAY 281 WERE PROVIDED BY TERRACON AND NOT SURVEYED DUE TO SNOW COVER. LOCATIONS TO BE FIELD VERIFIED.
 2.) BENZENE CONCENTRATION LINES REPRESENTING IMPACTED GROUNDWATER ARE BASED ON INTERPOLATION BETWEEN SAMPLING POINTS. ACTUAL SUBSURFACE CONDITIONS MAY VARY.
 3.) DASHED CONTOUR LINES REPRESENTING IMPACTED GROUNDWATER ARE BASED ON EXTRAPOLATION BETWEEN SAMPLING POINTS. ACTUAL SUBSURFACE CONDITIONS MAY VARY.
 4.) MONITORING WELLS WITH TWO CONCENTRATIONS (0.0168/0.00712), THE FIRST CONCENTRATION IS THE WELL SAMPLE AND THE SECOND CONCENTRATION IS THE DUPLICATE RESULT.



DISSOLVED BENZENE PLUME MAP
 TOMLINSON ERCS SITE
 217 SECOND STREET
 ST. PAUL, NEBRASKA

Project Mgr:	BSN	Project No:	40945005
Designed By:	BSN	Scale:	AS SHOWN
Drawn By:	PAI	File No:	4E005R116
Checked By:	DDS	Date:	FEBRUARY 2006
Approved By:	RMB	Figure No.:	7